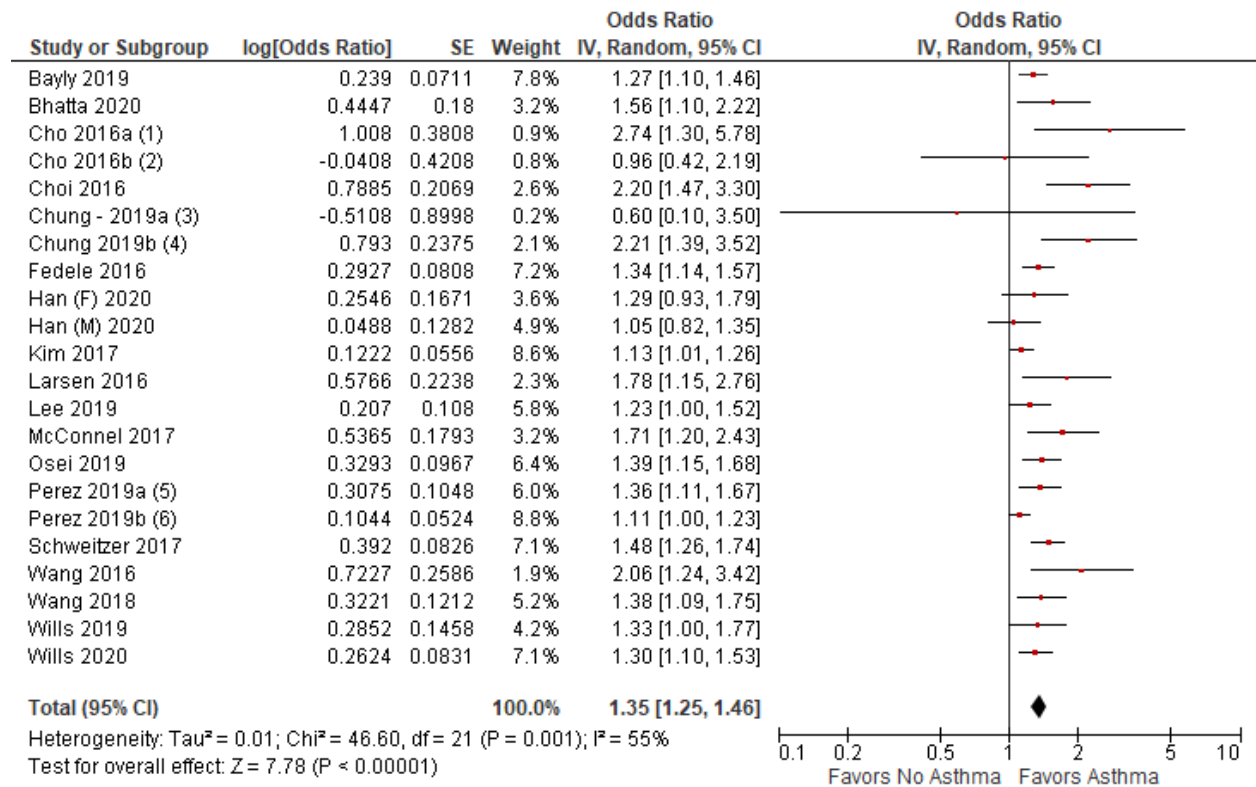


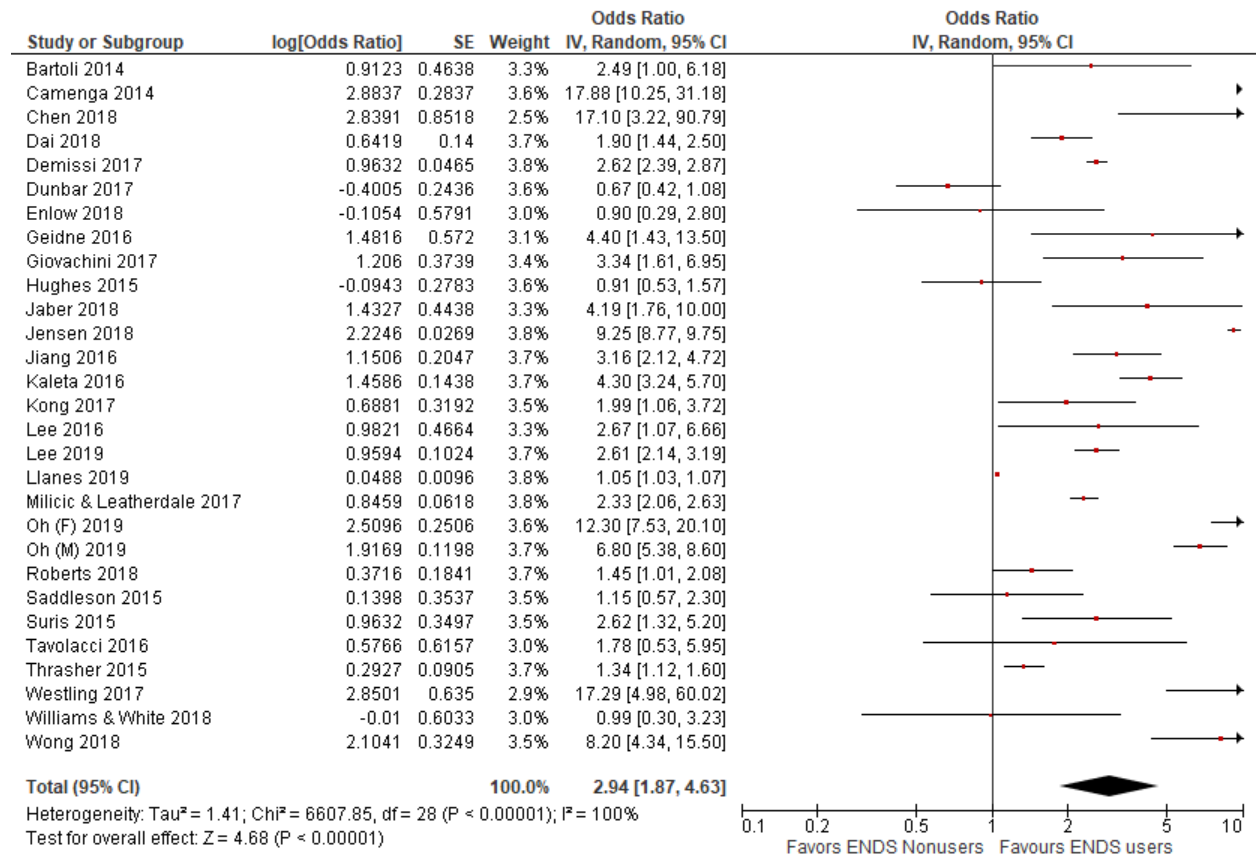
**Figure 1. Association of EC use with asthma in the human population**



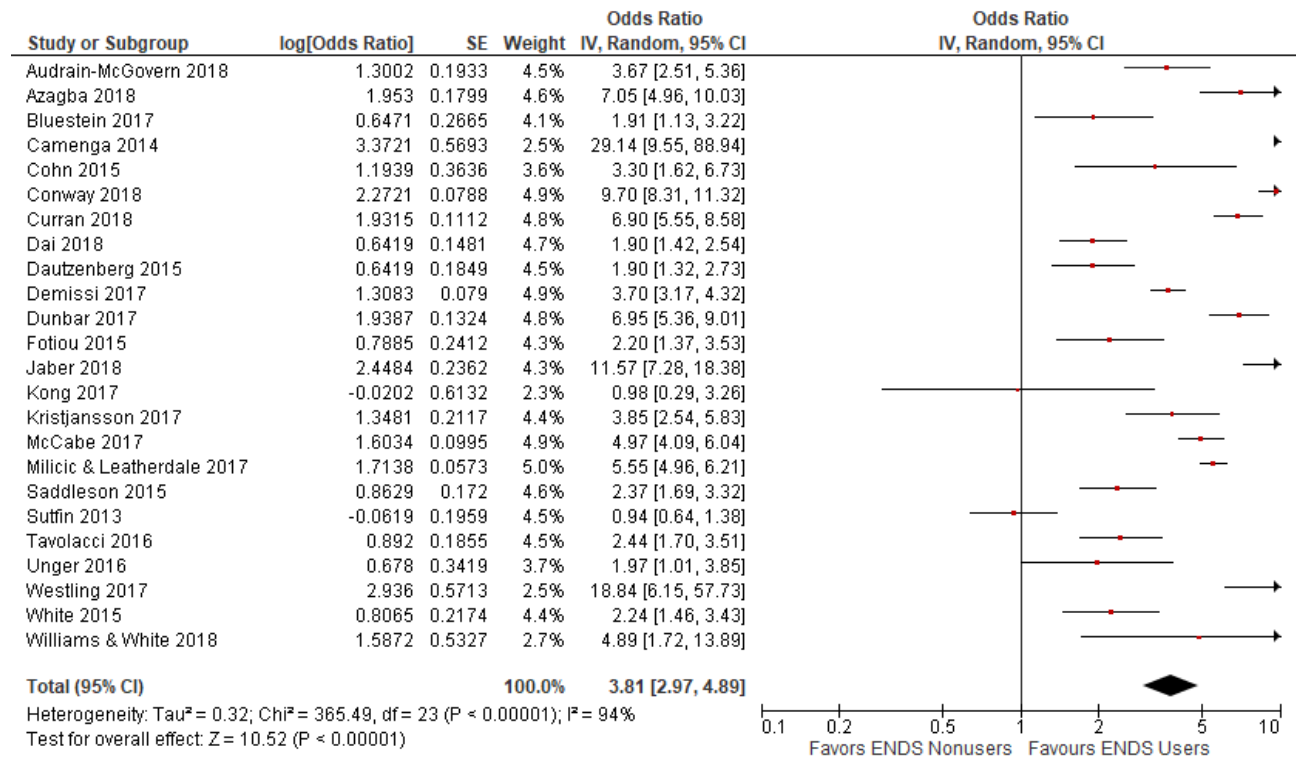
**Footnotes**

- (1) Among current EC users
- (2) Among former EC users
- (3) Among current EC users
- (4) Among former EC users
- (5) Among current EC users
- (6) Among former EC users

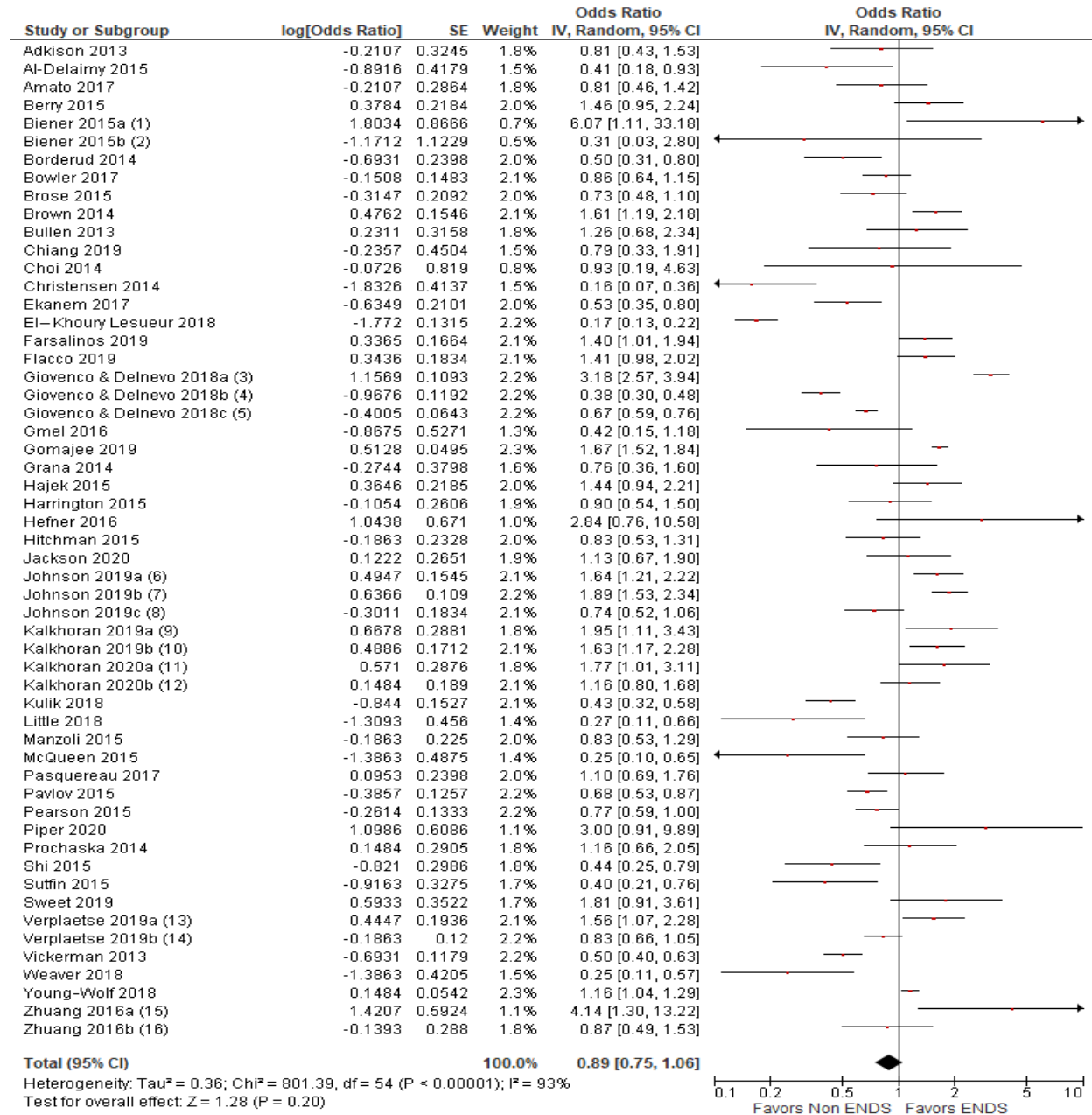
**Figure 2. Association of ENDS with alcohol use (ENDS nonuser vs ENDS users)**



**Figure 3. Association of ENDS with marijuana use (ENDS nonuser vs ENDS users)**



**Figure 4. Association of ENDS with smoking cessation (OR) – Meta-analysis from observational studies.**



**Footnotes**

- (1) Intense users
- (2) Intermittent users
- (3) Daily EC use
- (4) Less than daily EC use
- (5) Prior but no current EC use
- (6) NHIS data
- (7) TUS–CPS daily cigarette smokers
- (8) TUS–CPS less than daily cigarette smokers
- (9) Any chronic medical condition
- (10) No chronic medical condition
- (11) Daily EC use
- (12) Less than daily EC use
- (13) Daily EC use
- (14) Less than daily EC use
- (15) EC use at both baseline and 2 year follow-up
- (16) EC use at either baseline or 2 year follow-up, but not both

**Figure 5. Association of ENDS with combustible cigarette smoking initiation**

